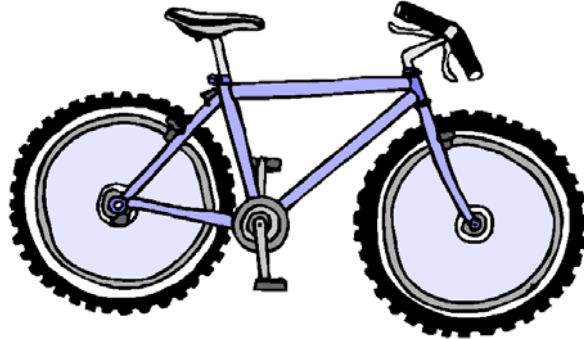


TASK 3: BUYING A BIKE

Answer all questions in this task.

Show clearly how you get your answers as marks may be given for your working out.

The same bicycle is sold in three different shops.



Here are the price labels shown on each bicycle.

Stan's Bikes	Dave's Discount Bikes	Mellors Bike Shop
<p>£390 (inc VAT)</p> <p>Get $\frac{1}{3}$ off ticket price</p>	<p>£312 (inc VAT)</p> <p>20% discount on ticket price</p>	<p>£221</p> <p>Add 15% VAT to ticket price</p>

- 1) Work out the new prices.
- 2) What is the range of prices?